



OAKFIELD



Conifer Close, Hastings TN34 2DS

Asking Price £335,000



Conifer Close, Hastings TN34 2DS

Stunning Four Bedroom Semi-Detached House in Desirable Hastings Location

This beautiful semi-detached house boasts four spacious bedrooms, a convenient downstairs WC, and a stunning finish throughout. Located in a highly sought-after area of Hastings, this property is perfectly positioned close to reputable schools and local amenities.

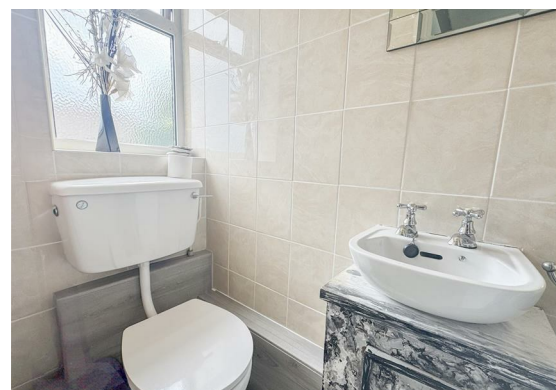
The heart of the home is the generous-sized kitchen, complete with a range of modern amenities including an electric oven, gas hob, and ample space for a freestanding washing machine and dishwasher. Perfect for culinary enthusiasts and busy families alike.

The first floor is home to a luxurious family bathroom, beautifully appointed with a wash hand basin, WC, and bath with shower over, complete with a sleek glass shower screen.

The property benefits from a lovely garden, ideal for outdoor entertaining and relaxation, as well as a garage providing secure parking and additional storage.

With its desirable location, high-quality finish, and excellent amenities, this property is an exceptional opportunity for families, professionals, and investors alike.





Reception Room

19'8" x 16'10 (5.99m x 5.13m)

Kitchen

11'9" x 8'3 (3.58m x 2.51m)

Bedroom

12'11" x 8'10 (3.94m x 2.69m)

Bedroom

11'10 x 8'10 (3.61m x 2.69m)

Bedroom

9'7" x 7'6" (2.92m x 2.29m)

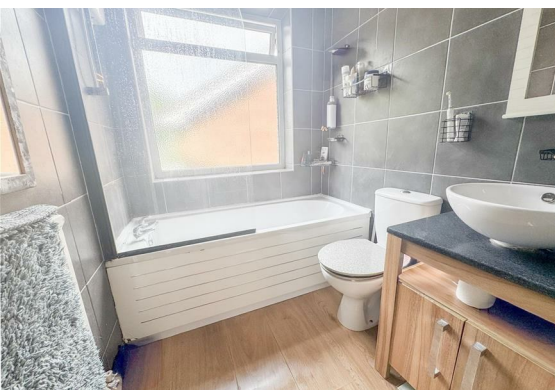
Bedroom

8'8" x 7'7" (2.64m x 2.31m)

Bathroom

6'4" x 5'6" (1.93m x 1.68m)

Council Tax Band C - £2,270.34 (Per Annum)



Floor Plan

